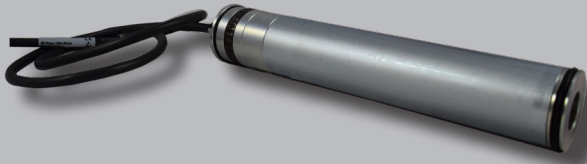


The motoroller series at a glance

Gearless motoroller 46 - cartridge version **800rpm@24-48 Vdc**

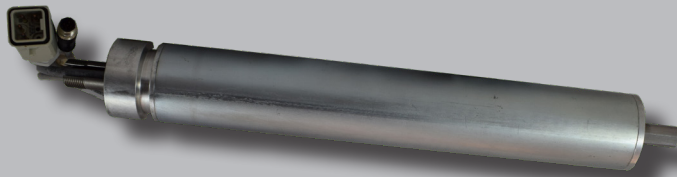


Frameless gearless cartridge motoroller for general conveyor applications. Suitable for 50mm roller tube integration, roller tube range available on request

Features

- » Two models
- » Rated power 50 Watt and 115 Watt
- » Rated torque 0,6 Nm and 1,35 Nm
- » Hall sensors and encoder feedback for higher precision
- » Cartridge diameter 46 mm suitable for all 50 mm diameter tube
- » 24 and 48Vdc power supply
- » Full speed control
- » Wide roller customization

Gearless power pack motoroller 60 **800rpm@60 Vdc**



Tube equipped gearless motoroller for cross belt driving and controlling.

Features

- » Ready to use motoroller 60mm diameter
- » Rated power 235 Watt
- » Rated torque 2,8 Nm
- » 60Vdc power supply
- » Full speed control

Gearless motoroller 76 **Cartridge version** **800rpm@48-65 Vdc**



Gearless cartridge motoroller for cross belt driving and controlling. Suitable for 80mm roller tube integration, roller tube range available on request

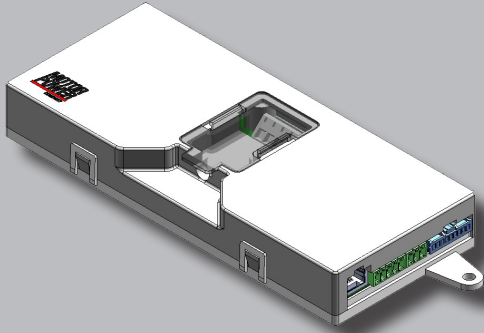
Features

- » Rated power 260 Watt
- » Rated torque 3,1 Nm
- » Encoder feedback for higher precision
- » Cartridge diameter 76 mm suitable for all 80 mm diameter tube
- » 48 and 65 Vdc for power supply
- » Full speed control
- » Wide roller customization

SEE IT BEFORE IT HAPPENS

The drive series at a glance

DMR 50-5/50 dual axes drive



The perfect matched drive for enhancing motoroller 46 features

Features

- » Dual axes operation
- » 24 and 48 Vdc operating supply voltage
- » Encoder and Hall Sensor feedback
- » CanOpen Fieldbus
- » RS485 programming interface
- » I/O programmability for speed, start and stop control

Lite Pro drive



Lite Pro drive is ideal for controlling motoroller 60

Features

- » 24 and 48 Vdc operating supply voltage
- » Encoder and Hall Sensor feedback
- » CanOpen Fieldbus
- » I/O programmability for speed, start and stop control

DMR 76-10/65



Motoroller 76 matches drive DMR 76-10/65 for the perfect bundle

Features

- » 24 and 65 Vdc operating supply voltage
- » Encoder and Hall Sensor feedback
- » Profibus Fieldbus
- » I/O programmability for speed, start and stop control
- » I/O programmability for speed, start and stop control
- » I/O proxy dual loop

SEE IT BEFORE IT HAPPENS

**MOTOR
POWER**
COMPANY